

The Clear Choice in Continuous Nerve Blocks (CNB)

Developed together with Dr. Ban Tsui, the E-Cath II / E-Cath II Plus combines the best from clinical experience and engineering expertise, resulting in a system that addresses the biggest catheter problems in CNBs: complexity, catheter kinking, anaesthetic leakage and catheter dislocation and migration.^{1,2,3,4}

→ The results are easier, faster, safer and more reliable continuous nerve blocks and the reduction of workload during postoperative pain management.

Is your traditional catheter system giving you headaches?

LEAKAGE
MISSING 3RD HAND
DIFFICULT TO PLACE
DISLOCATION
TOO MANY STEPS
MIGRATION
KINKING



E-CATH II / E-CATH II PLUS ADVANTAGES

- ▶ Making catheter placement as easy as a single shot
- ▶ Reducing the chance of leakage
- ▶ Reducing the chance of dislocation and catheter migration¹
- ▶ Reducing the chance of catheter kinking
- ▶ Offering an optimised local anaesthetic spread
- ▶ Providing optimised ultrasound visibility of needle tip, needle shaft, and catheter

E-Cath® II & E-Cath® II Plus

E-Cath II

Needle with Cornerstone Reflectors (21G) with Facet S Tip, indwelling catheter and E-Catheter (20G)

Indwelling catheter	Working Length: Combined indwelling catheter + E-Cath II	Item no.	NRFit® Item no.	PU	FixoLong	Filter 0.2 µm	FixoCath
18G x 50mm (2")	52mm	301185-40E	301165-40E	10	•	•	
18G x 50mm (2")	52mm	301285-40E	301265-40E	10			•
18G x 80mm (3 1/4")	82mm	311185-40E	311165-40E	10	•	•	
18G x 80mm (3 1/4")	82mm	311285-40E	311265-40E	10			•
18G x 100mm (4")	102mm	361185-40E		10	•	•	
18G x 100mm (4")	102mm	361285-40E		10			•
18G x 130mm (5 2/5")	132mm	351185-40E		10	•	•	
18G x 130mm (5 2/5")	132mm	351285-40E		10			•
18G x 150mm (6")	152mm	371285-40E		10			•

E-Cath II Plus

Needle with Cornerstone Reflectors (21G) with Facet S Tip, indwelling catheter and E-Catheter (20G) with stylet (beginning 70 mm from tip) and 15 mm extended tip

Indwelling catheter	Working Length: Combined indwelling catheter + E-Cath II Plus	Item no.	NRFit® Item no.	PU	FixoLong	Filter 0.2 µm	FixoCath
18G x 50mm (2")	65mm	301185-41E	301165-41E	10	•	•	
18G x 50mm (2")	65mm	301285-41E		10			•
18G x 80mm (3 1/4")	95mm	311185-41E	311165-41E	10	•	•	
18G x 80mm (3 1/4")	95mm	311285-41E		10			•



Scan now!

PAJUNK® GmbH Medizintechnologie
Global Headquarters
Karl-Hall-Strasse 1
78187 Geisingen, Germany
Tel.: +49 7704 9291-0
Fax: +49 7704 9291-600
info@pajunk.com
pajunk.com

PAJUNK® Medical Produkte GmbH
Central Europe
Karl-Hall-Strasse 1
78187 Geisingen, Germany
Tel.: +49 7704 8008-0
Fax: +49 7704 8008-150
info@pajunk-medipro.com
pajunk.de & pajunk.eu

PAJUNK® Swiss AG
Switzerland
Neuhofstrasse 5A
6340 Baar, Switzerland
Tel.: +41 417 609 627
info@pajunk.ch
pajunk.ch

PAJUNK® Medical System L.P.
United States of America
4575 Marconi Drive
Alpharetta, GA 30005, USA
Tel.: +1 888 972 5865
Fax: +1 678 514 3388
info@pajunk-usa.com
pajunkusa.com

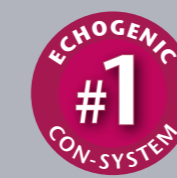
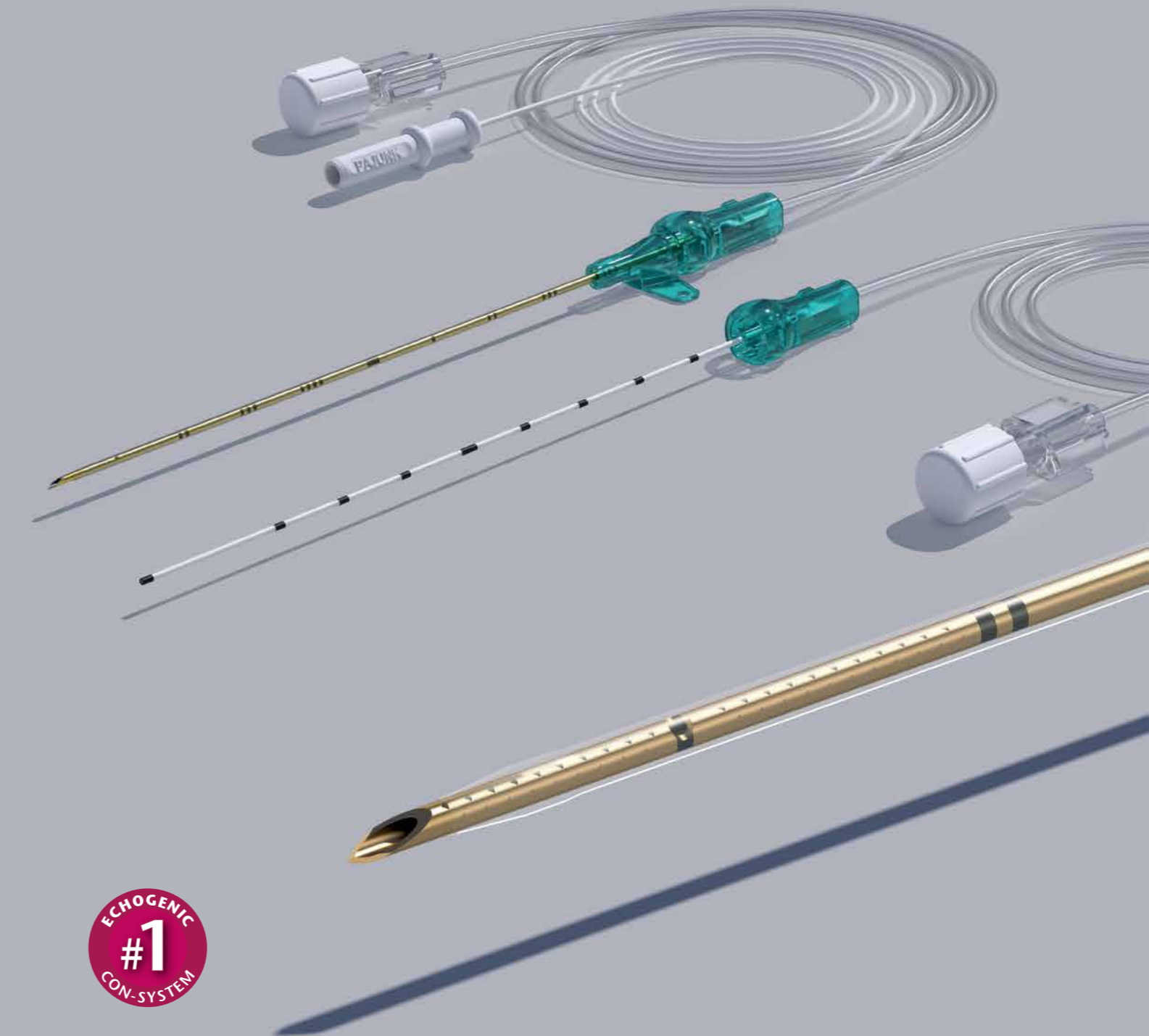
PAJUNK® UK Medical Products Ltd
United Kingdom
Unit D1 The Waterfront
Goldcrest Way, Newburn Riverside
Newcastle upon Tyne, NE15 8NY, UK
Tel.: +44 191 264 7333
info@pajunk.co.uk
pajunk.co.uk

CE 0124 XS200246 04/23

PAJUNK®

E-Cath® II & E-Cath® II Plus

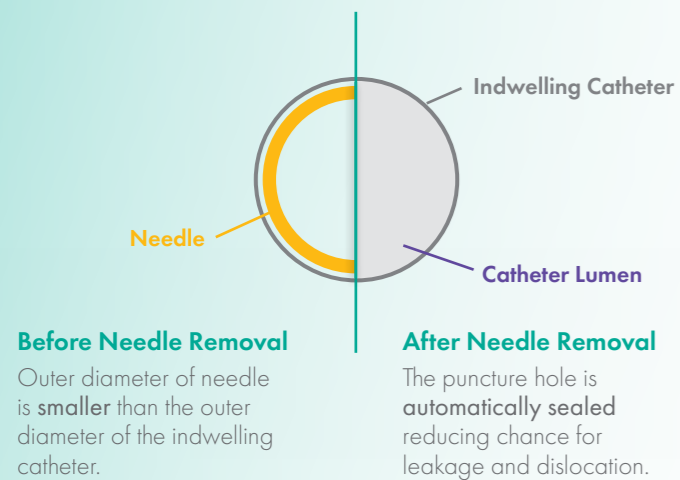
Echogenic Catheter-Over-Needle CNB-System



Catheter-Over-Needle (CON) Echogenic CNB-System

CATHETER-OVER-NEEDLE (CON) TECHNIQUE

- Significantly reduces the chance of anaesthetic leakage and catheter dislocation or migration⁴



Non-Removable Injection Tubing

- Reduction of procedural steps
- Closed system
- No leakage
- Catheter adapter is pre-assembled to the catheter system



Bayonet Lock

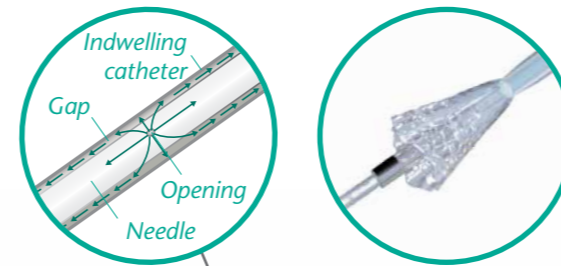
- Ensures a safe and leakage-free connection between the needle / E-catheter and the indwelling catheter
- Provides audible and haptic click feedback

Soft Tip

- Reduced chance of nerve damage

Self Priming System

- E-Catheter comes with a proximal opening which allows the anaesthetic to flow, besides the open tip, also between the outer wall and the indwelling catheter
- Creates 360 degree flow
- Improves the U/S-visibility

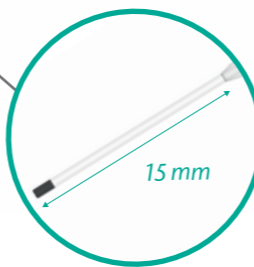


Double Layer Catheter Technology

- Significantly reduces the chance of kinking
- Allows for consistent anaesthetic flow

Extended E-Catheter Tip

- Protrudes 15 mm past the indwelling catheter
- Easy placement past the nerve
- Compensates for minor tissue movement reducing chance of catheter migration

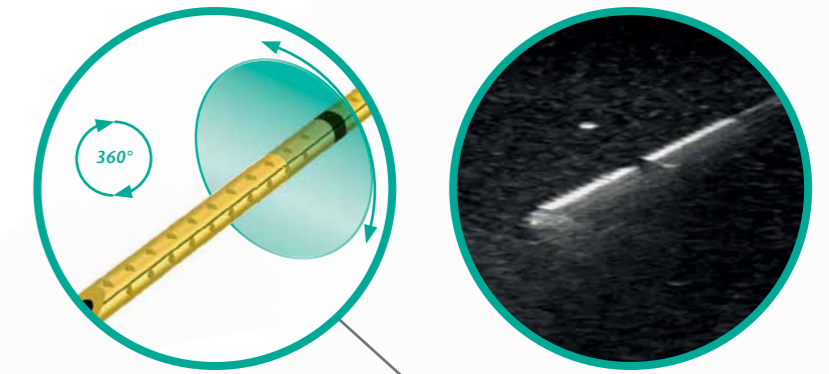


E-Cath II Plus

- Brings all the benefits of the classic E-Cath II system and offers additionally the following features:
- Longer inner catheter tip (15 mm past the indwelling catheter)
- Unique 360 degree side port along the 3 lateral openings
- Integrated stylet (35 mm length) for easier catheter threading

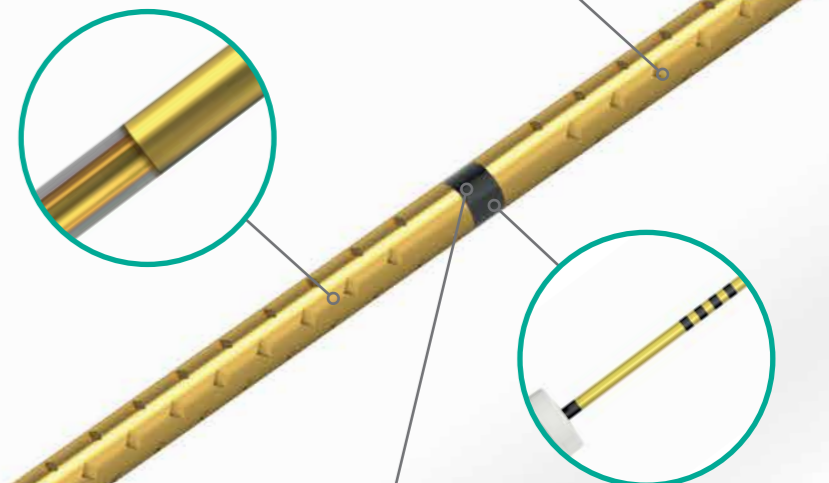
Cornerstone Reflectors

- 360 degree graduations on the first 20 mm of the needle
- Optimised ultrasound visibility of needle shaft⁵
- Reliable and optimised needle visualisation at any angle^{6,7}



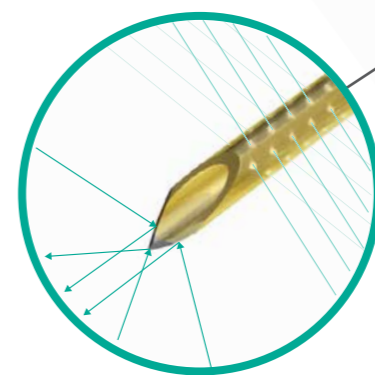
NanoLine® Coating

- Very thin polymer film, smooth surface, accurate inner and outer diameter
- Excellent puncture and gliding properties through smooth surface
- Improves visibility under ultrasound⁷
- Precise stimulation through the non-insulated needle tip



Depth Markings

- Easy to read and identify

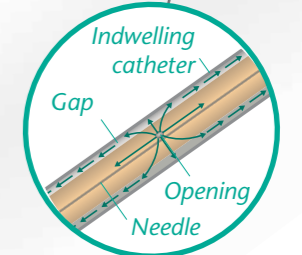


Echogenic Needle Tip

- Facet tip with two inclination angles
- Improves needle tip visibility under ultrasound

Self Priming System

- Needle comes with a distal opening which allows the anaesthetic to flow, besides the needle tip, also between the outer needle wall and the indwelling catheter
- Improves ultrasound visibility



Also available in NRRFit®

1. Ip V, H, Y. et al. The catheter-over-needle assembly offers greater stability and less leakage compared to the traditional counterpart in continuous interscalene nerve blocks: a randomized, patient-blinded study. *Can. J. Anesth.* 2013; 60: 1272-1273
 2. Ip V, H, Y. et al. The safety of an interscalene catheter-over-needle technique. *Anesth.* 2013; 68: 774-775
 3. Herring A, A. et al. Emergency department placement of peripheral catheters for femoral fracture pain management. *Am. J. Emerg. Med.* 2014; 32(3): 287-1-3
 4. Tsai B, C, H. et al. Less leakage and dislodgement with a catheter-over-needle versus a catheter-through-needle approach for peripheral nerve block: an ex vivo study. *Can. J. Anesth.* 2012; 59: 655-661 [E-Cath is called Multi-Set in this study]

5. Fuzier R, et al. The echogenicity of nerve blockade needles. *Anesth.* 2015; 70: 462-466
 6. Uppal V, et al. Effect of beam steering on the visibility of echogenic and non-echogenic needles: a laboratory study. *Can. J. Anesth.* 2014 Oct; 61(10): 909-915
 7. Hebard S, Hocking G. Echogenic technology can improve needle visibility during ultrasound-guided regional anesthesia. *Reg. Anesth. Pain Med.* 2011 March-April; 36(2): 185-189